

**Mattituck-Cutchogue  
UFSD  
Facilities**

**March 16, 2023**

**Tom Kelly  
School Maintenance  
Crew Leader  
[tkelly@mufsd.com](mailto:tkelly@mufsd.com)**



## All Students Meeting the Vision of the Mission Statement

---



- Resurfaced the track at the high school
- New BMS system along with new burners installed in middle school
- Redesigned, resurfaced gym floors and painted walls
- Installed walking path at elementary school
- Redesigned and resurfaced gym floors at elementary school
- Recoating and replaced section of elementary school roof
- Seal coated and restriped parking lot at elementary school

## All Students Meeting the Vision of the Mission Statement

---



- STEM wing remodeling at high school
- Remodeling room 225 (old computer lab) at high school
- Sealcoating and restriping parking lot at high school
- New main entrance awning at elementary school
- New playground at elementary school
- New irrigation for flowerbeds at elementary school

Completed newly resurfaced and restriped track at high school



Completed high school gym floors and freshly painted walls



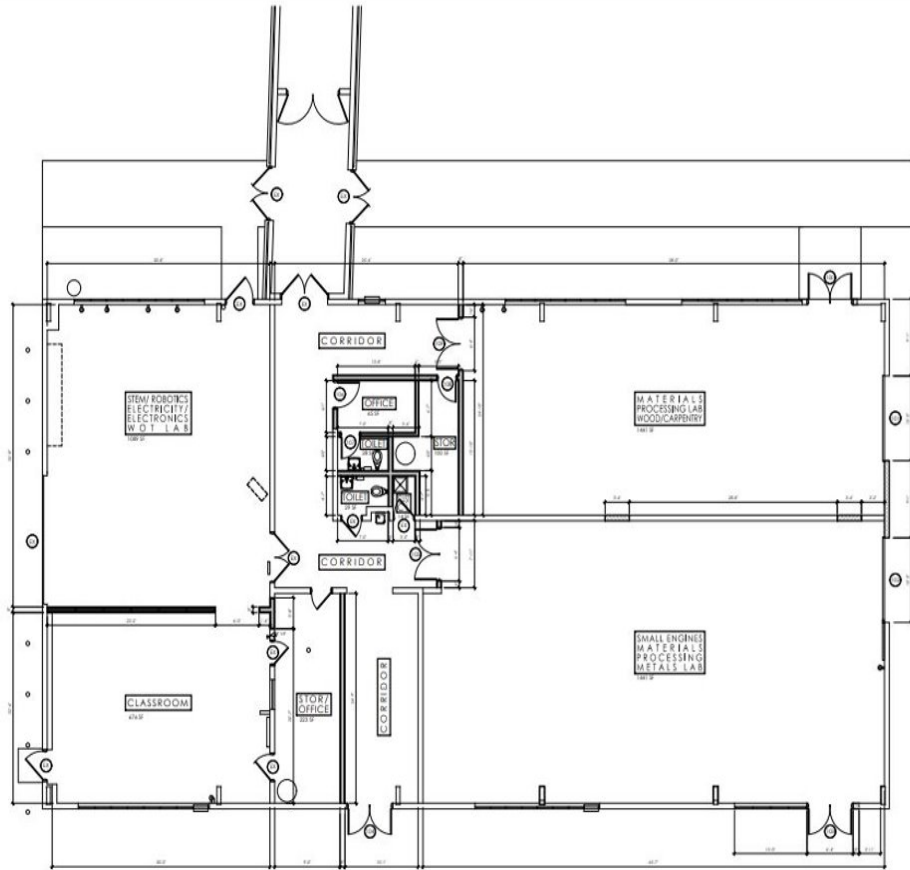
Completed new walking path at elementary school



Completed roof sealcoating at elementary school



Proposed new STEM wing at high school



Room 225 at high school to be renovated



Proposed new awning at elementary school main office entrance



Proposed new playground at elementary school



# Facilities



Budget Account	Account Name	22-23 Budget	23-24 Proposed	Change (\$)	Descriptions
A 1620.200-10	OPERATION OF PLANT - EQUIPMENT - CE	10,000	16,500	↑ 6,500	New A/C in various rooms
A 1620.200-20	OPERATION OF PLANT - EQUIPMENT - MHS	65,000	7,500	↓ (57,500)	New rooftop units in 22-23. Split unit for 23-24
A 1620.200-90	OPERATION OF PLANT - EQUIPMENT - DW	12,000	17,700	↑ 5,700	District wide equipment and tools, Laurel Maintenance
A 1620.202-90	OPERATION OF PLANT - GROUNDS/FIELD EQUIPMENT - DW	3,000	10,500	↑ 7,500	Misc. grounds equipment
A 1620.205-90	OPERATION OF PLANT - PLUMBING/HEATING EQUIPMENT - DW	21,000	16,000	↓ (5,000)	Districtwide steam traps & cage units, steam valves, Uninvent coils & parts, Thermostat replacements
A 1620.400-10	OPERATION OF PLANT - CONTRACTUAL OTHER - CE	49,830	30,200	↓ (19,630)	Outside contractor expenses- new carpet band and chorus room 22 23
A 1620.400-20	OPERATION OF PLANT - CONTRACTUAL OTHER - MHS	35,900	67,600	↑ 31,700	Update of Room 225
A 1620.400-90	OPERATION OF PLANT - CONTRACTUAL OTHER - DW	323,317	337,000	↑ 13,683	Electrical work, Oil Burner maintenance, Alarm monitoring, A/C Repairs, Garbage Collection, Dump fees, Carpet & Hood Cleaning
A 1620.401-90	OPERATION OF PLANT - VEHICLE MAINTENANCE - DW	8,000	8,500	↑ 500	Vehicle service and repairs
<b>Subtotal</b>		<b>528,047</b>	<b>511,500</b>	<b>↓ (16,547)</b>	



# Facilities



Budget Account	Account Name	22-23 Budget	23-24 Proposed	Change (\$)	Descriptions
A 1620.402-10	OPERATION OF PLANT - CONTRACTUAL OTHER - GROUNDS - CE	30,000	0	↓ (30,000)	Sealcoating CE Parking lot in 22-23
A 1620.402-20	OPERATION OF PLANT - CONTRACTUAL OTHER - GROUNDS - MHS	0	36,300	↑ 36,300	Sealcoating HS Parking lot in 23-24
A 1620.402-90	OPERATION OF PLANT - CONTRACTUAL OTHER - GROUNDS - DW	121,000	119,500	↓ (1,500)	Field maintenance, CE Tennis Court Resurface, Bleacher Inspections & Maintenance
A 1620.407-20	OPERATION OF PLANT - CONTRACT CLEANING MATH/SCIENCE WING - MHS	75,000	0	↓ (75,000)	Contracted Cleaning Company for Science and Math Wing previous years
A 1620.415-90	OPERATION OF PLANT - CONTRACTED HEALTH & SAFETY SERVICES - DW	11,000	0	↓ (11,000)	Moved to BOCES code
A 1620.420-10	OPERATION OF PLANT - ELECTRICITY - CE	147,000	150,000	↑ 3,000	Electricity - CE
A 1620.420-20	OPERATION OF PLANT - ELECTRICTY - MHS	328,300	330,000	↑ 1,700	Electricity - HS
A 1620.420-90	OPERATION OF PLANT - ELECTRICITY/NATURAL GAS - DW	14,700	14,700	→ (0)	Electricity - DW
A 1620.421-20	OPERATION OF PLANT - FUEL OIL - MHS	170,200	260,000	↑ 89,800	Fuel Oil - HS Mild Winter 22-23
A 1620.421-30	OPERATION OF PLANT - FUEL OIL - CW	23,000	20,000	↓ (3,000)	Fuel Oil - CW
A 1620.422-10	OPERATION OF PLANT - GAS - CE	36,800	38,000	↑ 1,200	Gas - CE
A 1620.425-90	OPERATION OF PLANT - TELEPHONE - DW	27,000	21,500	↓ (5,500)	Districtwide Telephone
<b>Subtotal</b>		<b>984,000</b>	<b>990,000</b>	<b>↑ 6,000</b>	

# Facilities



Budget Account	Account Name	22-23 Budget	23-24 Proposed	Change (\$)	Descriptions
A 1620.440-90	OPERATION OF PLANT - CONFERENCES & TRAVEL = DW	1,000	500	↓ (500)	Annual Facilities Conference & Travel
A 1620.450-10	OPERATION OF PLANT - SUPPLIES - CE	6,500	1,000	↓ (5,500)	Carpets for CE
A 1620.450-90	OPERATION OF PLANT - SUPPLIES - DW	85,600	87,950	↑ 2,350	Materials and Supplies
A 1620.451-90	OPERATION OF PLANT - VEHICLE SUPPLIES - DW	3,500	3,000	↓ (500)	Vehicle supplies
A 1620.452-90	OPERATION OF PLANT - GROUNDS/FIELDS SUPPLIES - DW	44,500	45,500	↑ 1,000	Fuel, Field, Vehicle Parts, Supplies, etc.
A 1620.457-90	OPERATION OF PLANT - CUSTODIAL SUPPLIES - DW	122,500	122,500	→ 0	Custodial Supplies
A 1620.490-90	OPERATION OF PLANT - BOCES - HEALTH AND SAFETY SERVICES - DW	7,000	18,000	↑ 11,000	Health and Safety Services now with BOCES
<b>Subtotal</b>		<b>270,600</b>	<b>278,450</b>	<b>↑ 7,850</b>	
<b>TOTAL</b>		<b>1,782,647</b>	<b>1,779,950</b>	<b>↓ (2,697)</b>	



# Planning for 2023-24 and the Future

---

- STEM wing remodeling at high school
- Remodeling room 225 at high school
- Main entrance awning at elementary school
- New playground at elementary school
- New irrigation for flowerbeds at elementary school
- Seal coating and restriping parking lot at high school
- Continuing on-going abatement and painting programs



Thank You For Your Continued Support